

Fun Bioinformatic Game within Galaxy

Mehmet Tekman

Alternative Splicing

Interactive Exercises (v0.93)

Genome Size

Reference Key

Splice Pair Key

Random Both?

Update

31-64 72-79

A0 D0 A1 A2 D1 A3 D2 A4 D3

Genome

TGGAAAAAGTATAATCTGGATCGAACCAAAGTAAAGGAAAAATCTCGGCTAAGACAAAGTTAGACGCTCTGTAATAGTGCCTGGGACGCAATCACGATGT

TATAATCTGGATCGAACCAA GAAAAATCTCGGCTAAGACAAA ACGCTCTCT TGCTTGGGACGCAATCACGAT

Ex1 Ex2 Ex3 Ex4

CTAAAGGAAAAATCTCGGCTAAGACAA CTAATAG

Transcriptome

TGGAAAAAGTATAATCTGGATCGAACCAAACGCTCTCTGCTTGGGACGCAATCACGATGT

TATAATCTGGATCGAACCAAACGCTCTCTGCTTGGGACGCAATCACGAT

Ex1 Ex3 Ex4

ES Exon Skipping at Ex2 via D0-A3 (31-64)
 CS Constitutive Splicing at Ex4 via D2-A4 (72-79)

Tools ☆

• 16: Text reformatting on data 1

You can check the status of queued jobs and view the resulting data by refreshing the History panel. When the job has been run the status will change from 'running' to 'finished' if completed successfully or 'error' if problems were encountered.

History + -

search datasets

Unnamed history

16 B 2 14

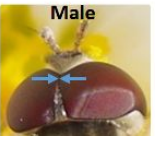
16: Text reformatting on data 1

1: Pasted Entry

Citizen Science Experiment!

Citizen Science Project

Help us identify the sex of these marmalade hoverflies! Look at the image, and then select a label below that you think fits best. These pictures are of *Episyrphus balteatus* which you can read more about on [Wikipedia!](#)



- GreenCUTANDRUN on Mapped Data
- LG GreenCUTandRUN
- MarkDuplicates, Scale, Igg Control
- LG GreenCUTandRUN
- MarkDuplicates, Scale
- 3 Motifs against a single Peak group

New Fun Game into Galaxy:
<https://mtekman.gitlab.io/alternative-splicing/>